

## ADA1868 Product Data Sheet

### Photoluminescent Blue Organic Pigment

ADA1868 is a photoluminescent organic pigment. In powder form this pigment changes from an off-white color to blue after being excited by light. The pigment has a high initial luminance and long afterglow time. It is light-resistant, aging-resistant and chemically stable (more than 10 years of life span). It is non-toxic, non-radioactive and non-flammable.

ADA1868 can be applied in switch-off home appliance, control board, flashlight, stairway, fire protection facility, fire alarm, lifesaving tools, buildings and safety fields.

#### Typical physical properties

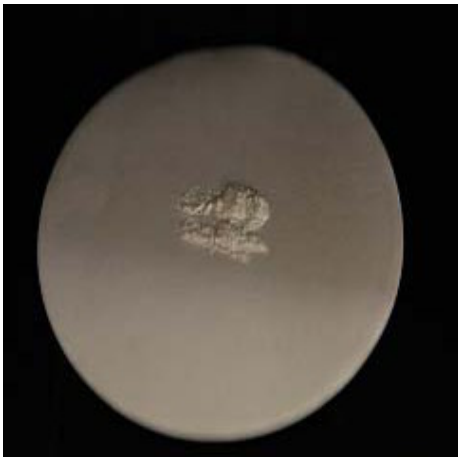
Luminance after 30 min ( $\text{mcd/m}^2$ ) = 108

Luminance after 60 min ( $\text{mcd/m}^2$ ) = 21

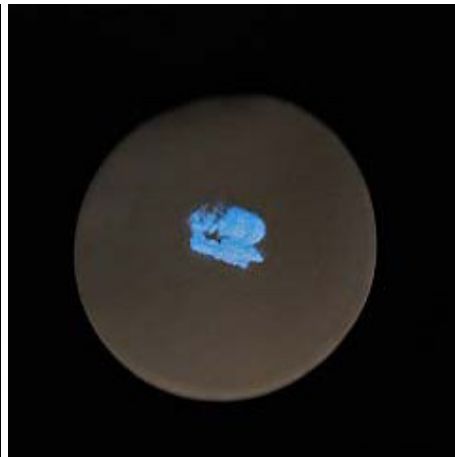
Appearance at visible light: Off-White powder

Photoluminescent color: Blue

Particle size: 35-45  $\mu\text{m}$



Appearance at visible light



Photoluminescent color

**All applications using this product should be thoroughly tested prior to approval for production.**

*The information herein is believed to be reliable and is to assist customers in determining whether our products are suitable for their applications. However, no warranty, express or implied, is made as to its accuracy or completeness and none is made as to fitness of this material for any purpose. Our products are intended for sale to industrial and commercial customers. We request that customers inspect and test our products before use and satisfy themselves as to contents and suitability. Nothing herein shall constitute any other warranty, express or implied, including any warranty of merchantability or fitness, nor of protection from any law or patent to be inferred. All patent rights are reserved. The exclusive remedy for all proven claims is replacement of our materials and in no event shall we be liable for special, incidental, or consequential damages. We shall not be liable for damages to person or property resulting from its use. Consult the Material Safety Data Sheet for additional information*